

# Ways of Worldmarking

Barry Smith

Department of Philosophy  
University at Buffalo

Institute for Formal Ontology and Medical  
Information Science  
Saarbrücken

“On one walk he ‘gave’ to me each tree that we passed, with the reservation that I was not to cut it down or do anything to it, or prevent the previous owners from doing anything to it: with those reservations it was henceforth *mine*.”

(Norman Malcolm, *Ludwig Wittgenstein: A Memoir*, London: OUP, 1958, pp. 31 f.)


*The Eruv is*  
***UP***

Los Angeles Community Eruv - Microsoft Internet Explorer

File Edit View Favorites Tools Help

Back Forward Stop Home Search Favorites

Address <http://www.laeruv.com/> Go



# Welcome to the Los Angeles Community Eruv.

*News and information about the **Los Angeles Community Eruv Society**.*

## For the Week of: Friday, July 21, 2006

The Eruv is not sponsored this week

# The Eruv is **UP**

The Eruv is up  
as of 12:30 Friday

To sponsor future weeks, send email to [chairman@laeruv.com](mailto:chairman@laeruv.com)  
or send a check to: Los Angeles Community Eruv P.O. Box 351360, Los Angeles,  
CA 90035

Parshat Matot-Masei  
Friday, July 21, 2006  
26 Tammuz 5766

Done Internet

Start Eudora - [In] Los Angeles Comm... 98% 8:39 AM

# An eruv

- a ceremonially demarcated area within which Orthodox Jews may engage on the Sabbath in activities that would otherwise be prohibited:
  - carrying walking sticks, pushing wheelchairs ...
- typically, an *eruv* is put in place by using existing horizontal wires strung on utility poles together with small vertical black rubber strips, called *lechis*, that form a symbolic "doorway."



if there is an  
eruv in your  
town, it looks  
like this

# eruv

from 'eruvim', meaning literally 'mixture' or 'mingling'

a public area is *halachically* converted into a private area

*(Transactions of the Institute of British Geographers 2002)*







# Tenafly (NJ) eruv

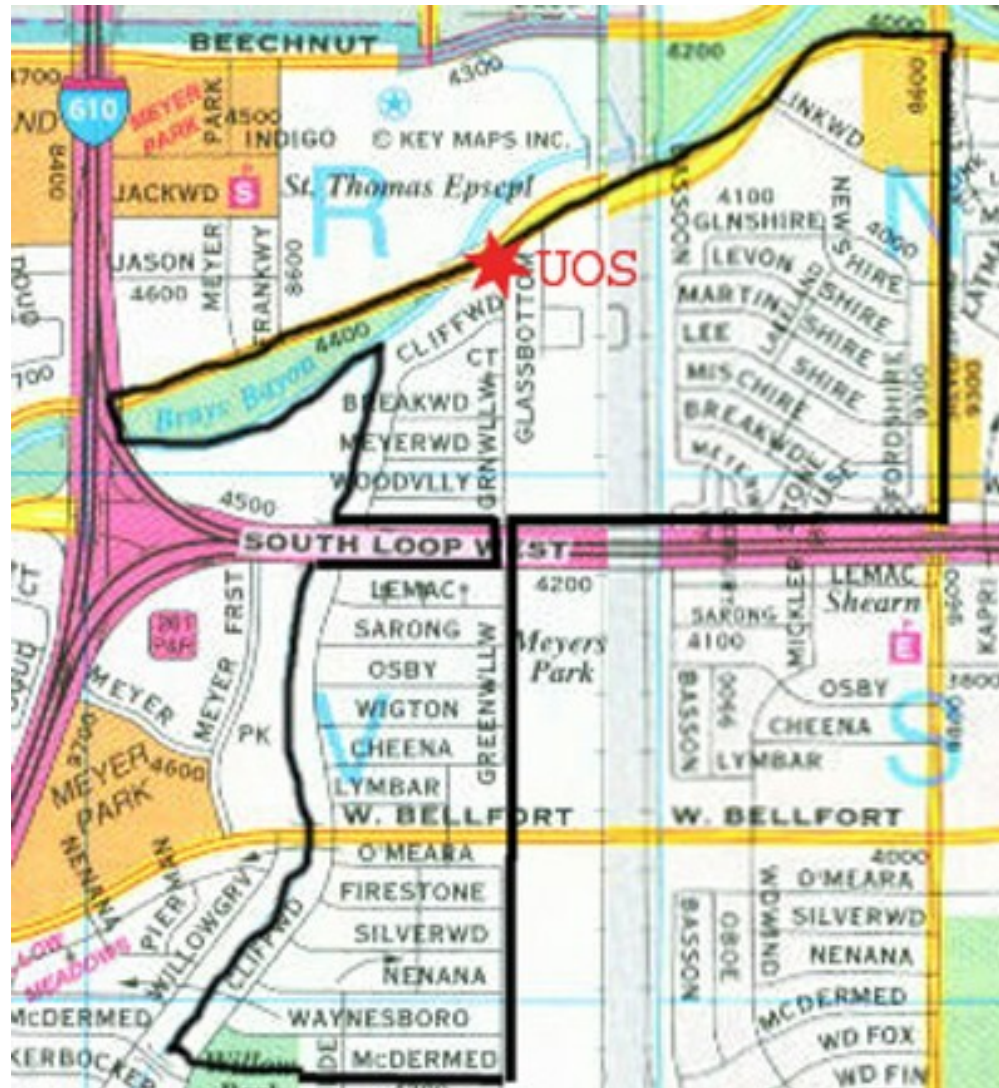
# Tenafly Council votes to have the U.S. Supreme Court hear its case against the Tenafly Eruv Association *(Jewish Week 2.7.2003)*

Without permission from the borough, the association put up *lechis* on utility poles, contravening a 1954 ordinance that prohibits placing signs or advertisements in the public right of way without permission (though such items as house numbers and church signs had often been posted on the poles without complaint).

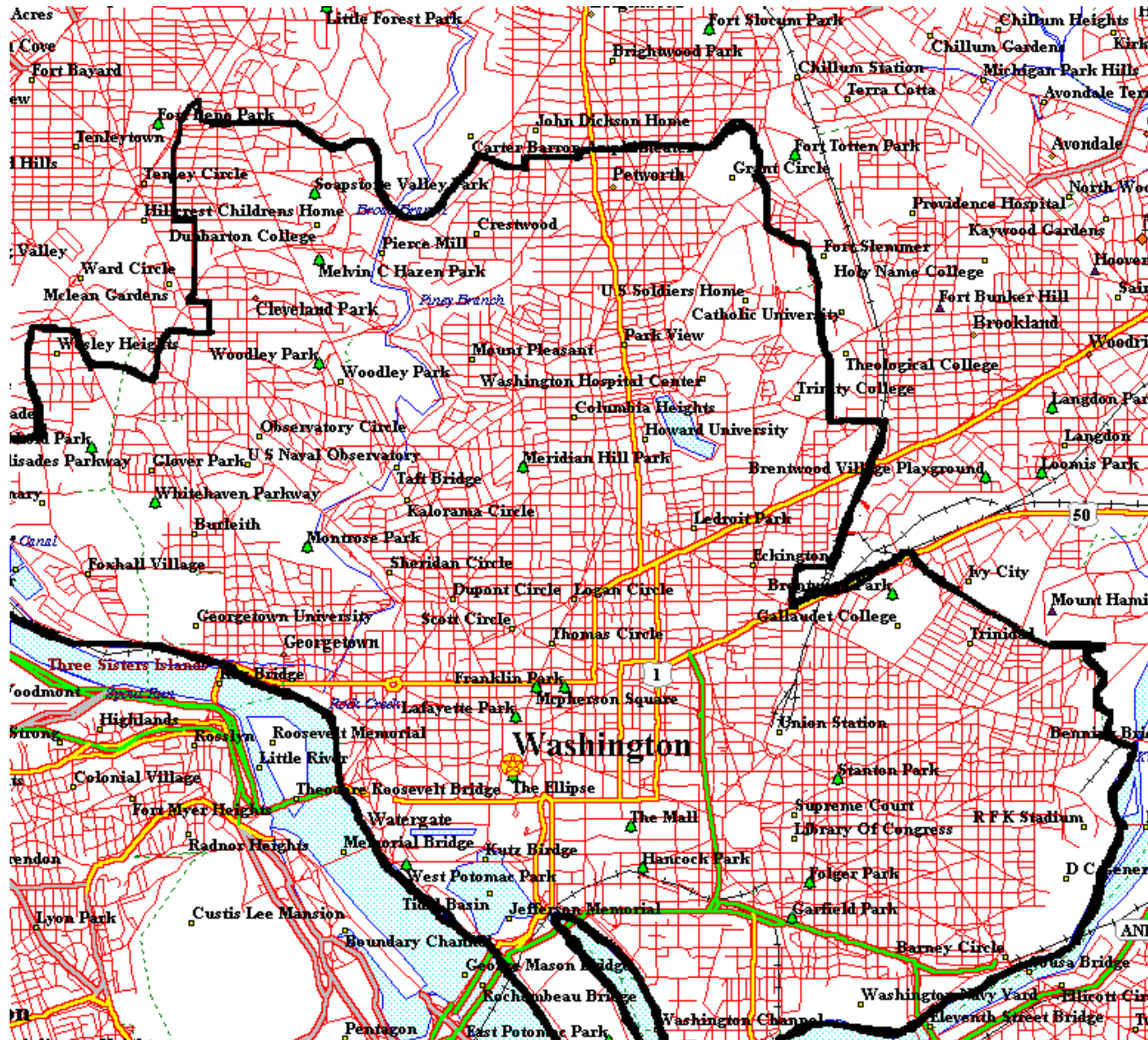


Photo : Baptiste Coulmont, NY, 08/2004

# Chicago eru



# Washington eruv



# Barnet (N. London) eruv

completed via strands of nylon fishing line stretched between poles at a height of 10 meters from the ground forming a 6½ sq. mile halachically enclosed area

# Barnet eruv

- Some Orthodox objected because they saw the restrictions on carrying as necessary to maintain social order
- Liberal Jews objected because they feared “the re-creation of ghettos” (*Geoforum* 2000)
- Secular liberals objected that the eruv impinges on their “human rights to freedom of thought, conscience and religion”.

# Ways of Worldstaining

liberal opponents perceive the eruv to be a challenge to ideas of secularism, the public–private divide and enlightenment rationality

– the eruv seems to ‘symbolically stain space’

D. Cooper, “Talmudic territory? Space, law, and modernist discourse”, *Journal of Law and Society* 1996



# Liberal objection to the Barnet eruv

- “Eruv-believers would happily pass through their symbolic gateways in the streets, but everyone else would be compelled to do so without such a benefit, even if the compulsory passage through the Eruv structures is offensive to a person’s beliefs.”
- what is the mistake here?

through?



or *under*?

img by ShalomNewYork.com

# The Peace of Westphalia (1648)

the governments of sovereign states are free to structure their relationships with their citizens independent of all external interference

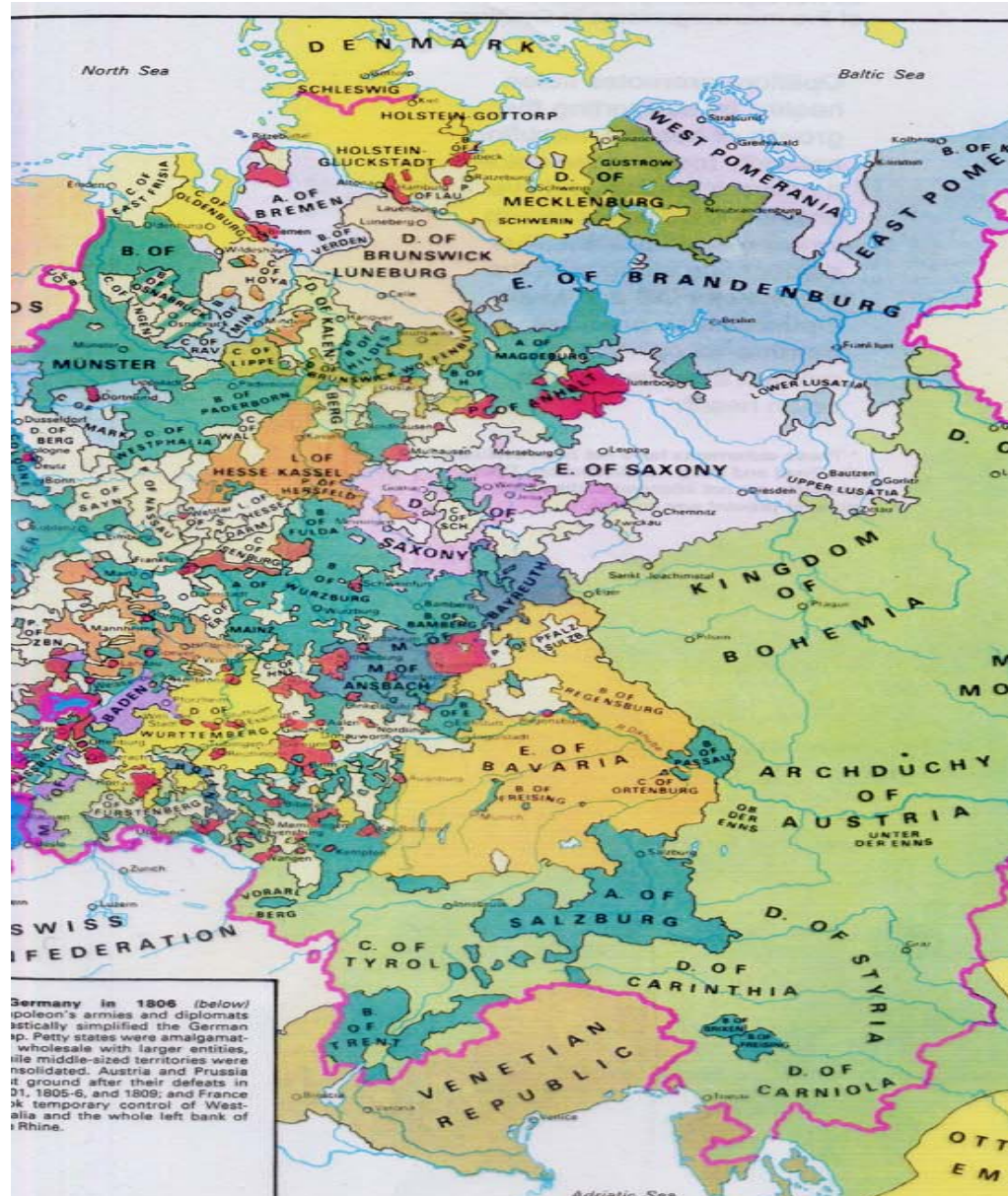
the king has 'all Rights...without any reserve...with all manner of Jurisdiction and Sovereignty.'

# The Peace of Westphalia Declared Eternal

The year 1624 was declared the 'standard year', according to which territories should be deemed to be in Roman Catholic or Protestant possession, with the provision that a prince should forfeit his lands if he changed his religion

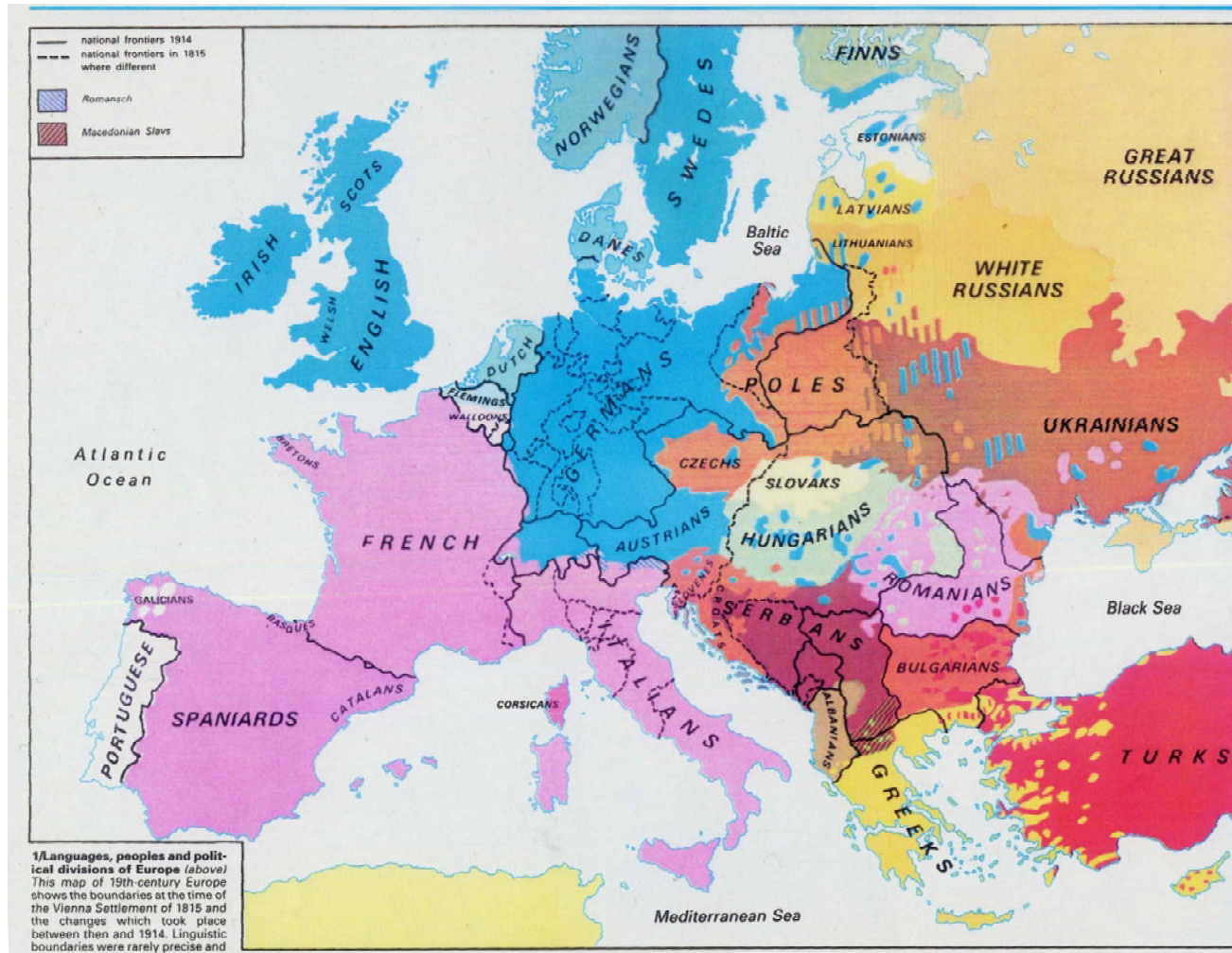
(Can the Westphalian Sovereign Paradigm Survive in Cyberspace?)

# German states in 1648





# 1914





This map illustrates the Western United States, highlighting the following details:

- States and Territories:** Washington, Oregon, Idaho, Montana, Wyoming, North Dakota, South Dakota, Minnesota, Iowa, Nebraska, Colorado, Utah, Nevada, California, Arizona, and New Mexico.
- Major Cities:** Olympia, Salem, Helena, Boise, Salt Lake City, Denver, Cheyenne, Rapid City, Pierre, Bismarck, St. Paul, Des Moines, Sacramento, Carson City, Reno, and Phoenix.
- Geographical Features:**
  - Mountains:** Siskiyou, Klamath, Mt. Lassen, Sierra Nevada, Coast Range, and various peaks in the Rockies and Appalachians.
  - Rivers:** Columbia, Snake, Missouri, Arkansas, Mississippi, Colorado, Rio Grande, and others.
  - Lakes:** Great Salt Lake, Pyramid Lake, and others.
- Indian Reservations and Land Areas:** Shoshone, Paiute, Northern Cheyenne, Arapaho, Wind River, Lakota, Navajo, Hopi, and others.
- Inset Maps:**
  - Four Corners Area:** Shows the intersection of Utah, Arizona, New Mexico, and Colorado, highlighting the Navajo, Hopi, and Zuni reservations.
  - New Mexico:** Shows the state's boundaries and major cities like Albuquerque and Santa Fe.



# Types of non-Westphalian partitions

## **condominiums**

### **(overlapping sovereignties)**

- The River Our is in Luxemburg *and* in Germany
- Lake Constance
- The Antarctic
- The Moon
- Berlin under the Four Powers

# Types of **non-Westphalian partition**

## **temporary boundaries**

Camp Zeist, a Scottish enclave located in the Netherlands from 1999 to 2002

created in order to allow the UK authorities to bring two Libyans accused of the 1988 Lockerbie bombing to trial on Scottish soil.

The eruv boundary is there only on  
certain days of the week

*The Eruv is*  
**UP**

The Eruv is up

as of 12:30 Friday

# Types of non-Westphalian partition

## indeterminate boundaries

# Lake Constance



# An ontological black hole in the heart of Europe



# Lake Constance

- Switzerland takes the view that the border runs through the middle of the Lake.
- Austria takes the view that all three countries have shared sovereignty over the whole Lake.
- Germany takes the view that Germany takes no view on the matter.

A patchwork of international treaties regulate specific matters subject to dispute.

# Types of non-Westphalian boundary-structures

one-sided boundaries





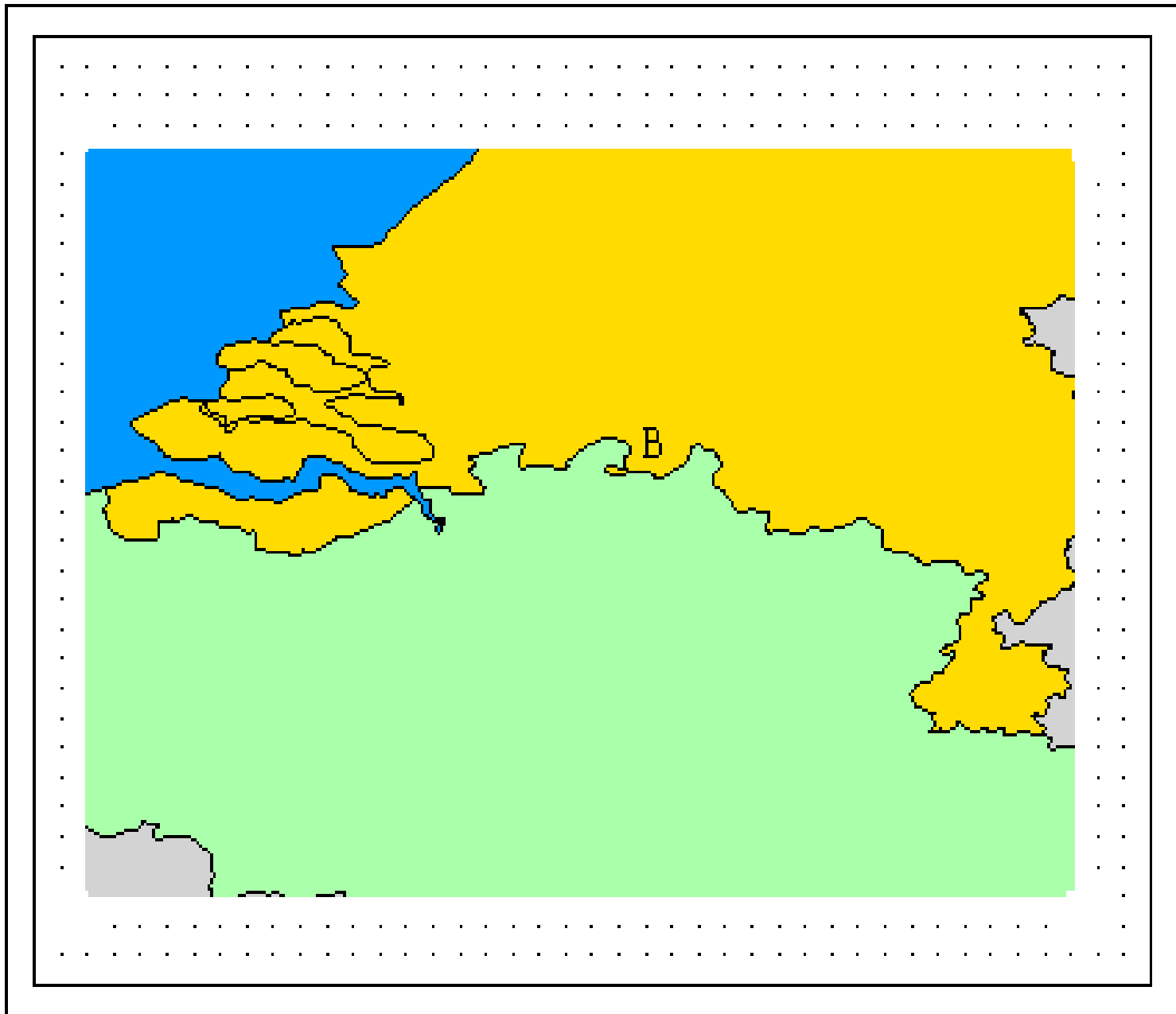
# From the Western side



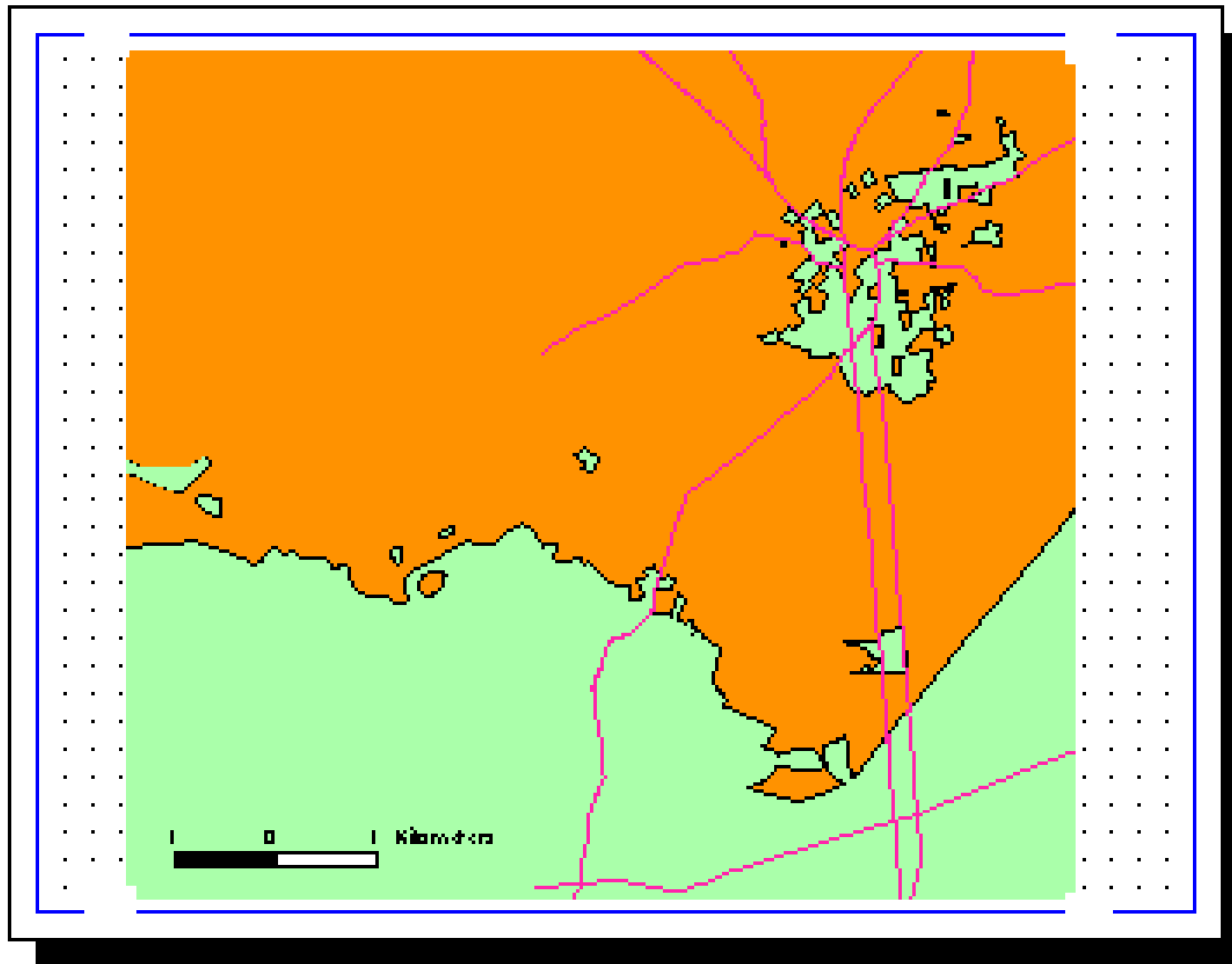
# Types of non-Westphalian partition

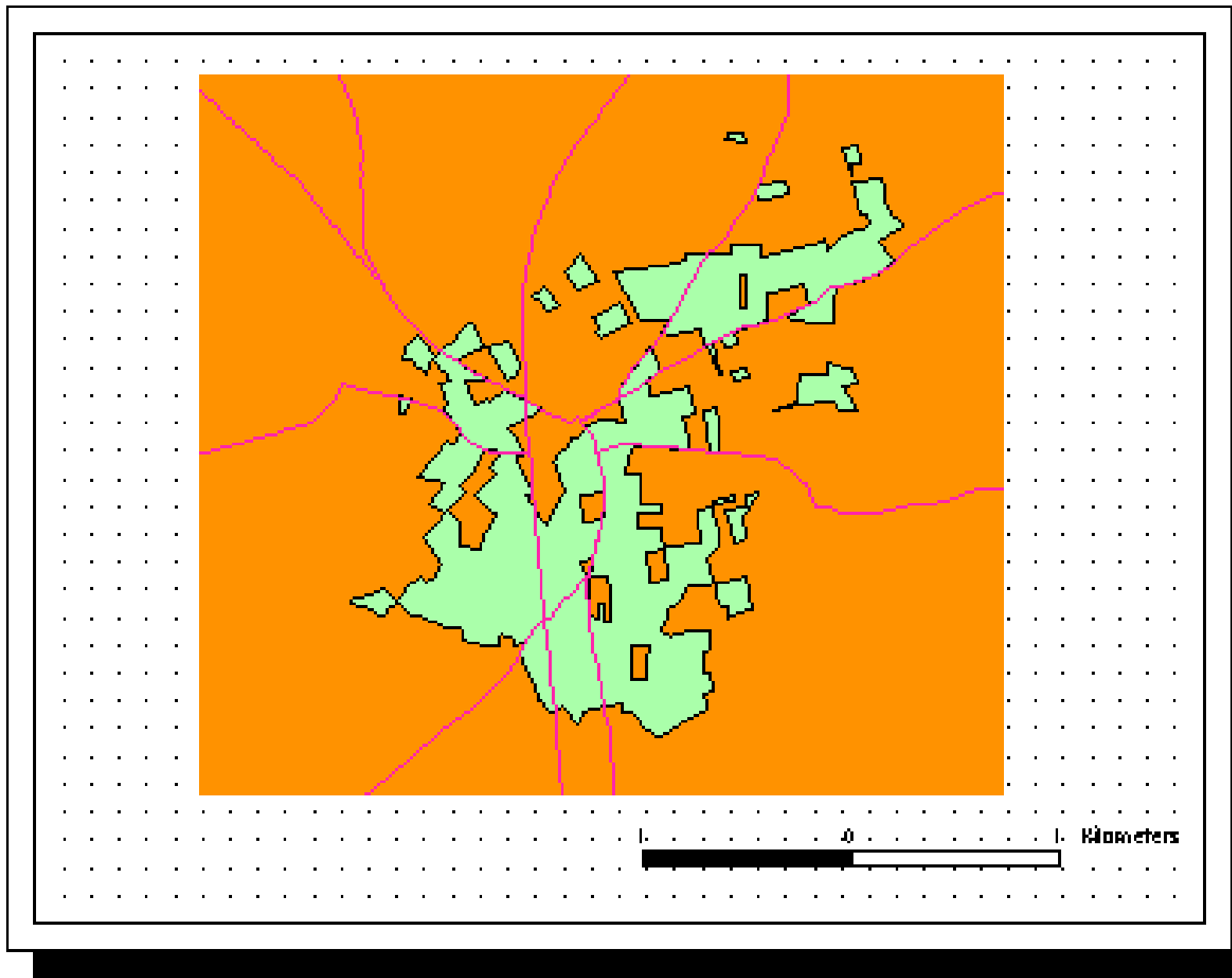
## fractal boundaries





# Baarle Nassau/Baarle Hertog





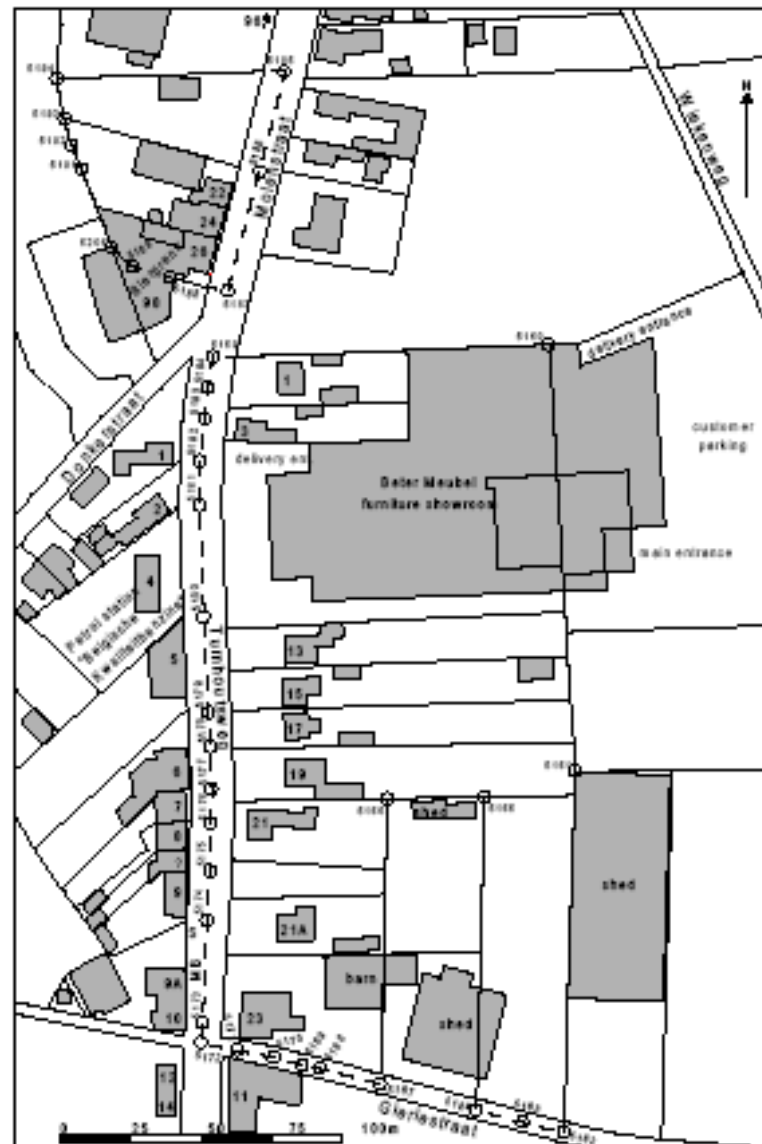


Figure 5a. Dutch counter-enclaves N3 & N5 in Belgian enclave H1

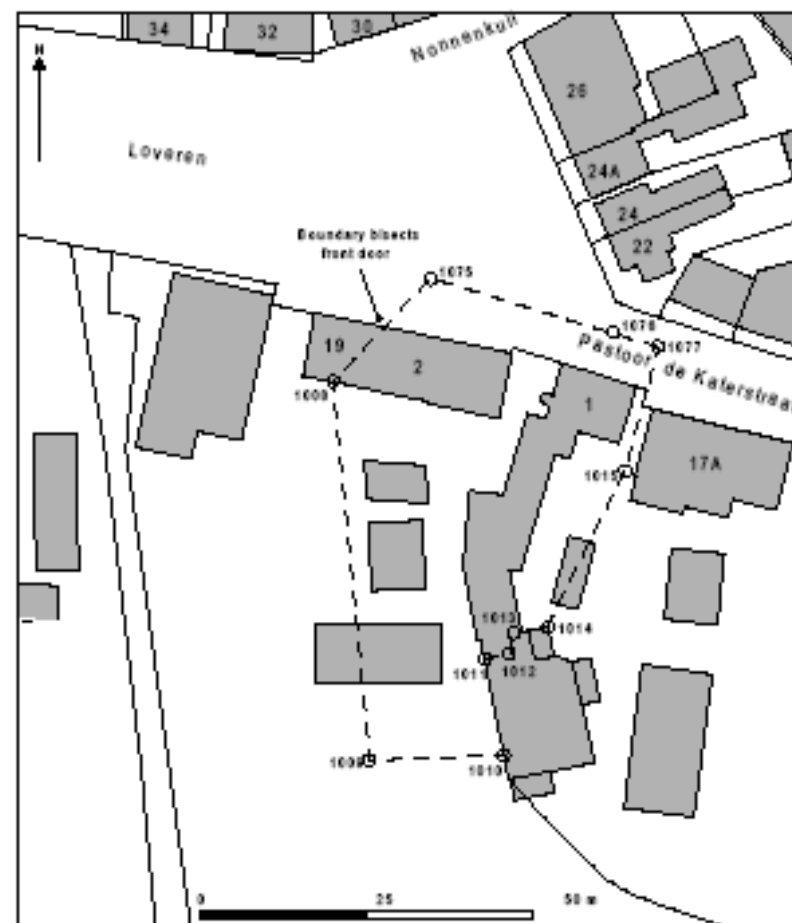
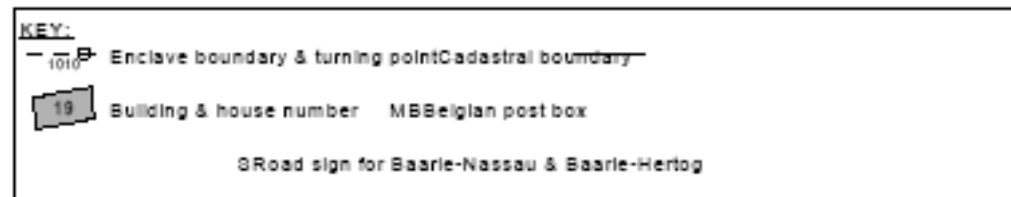
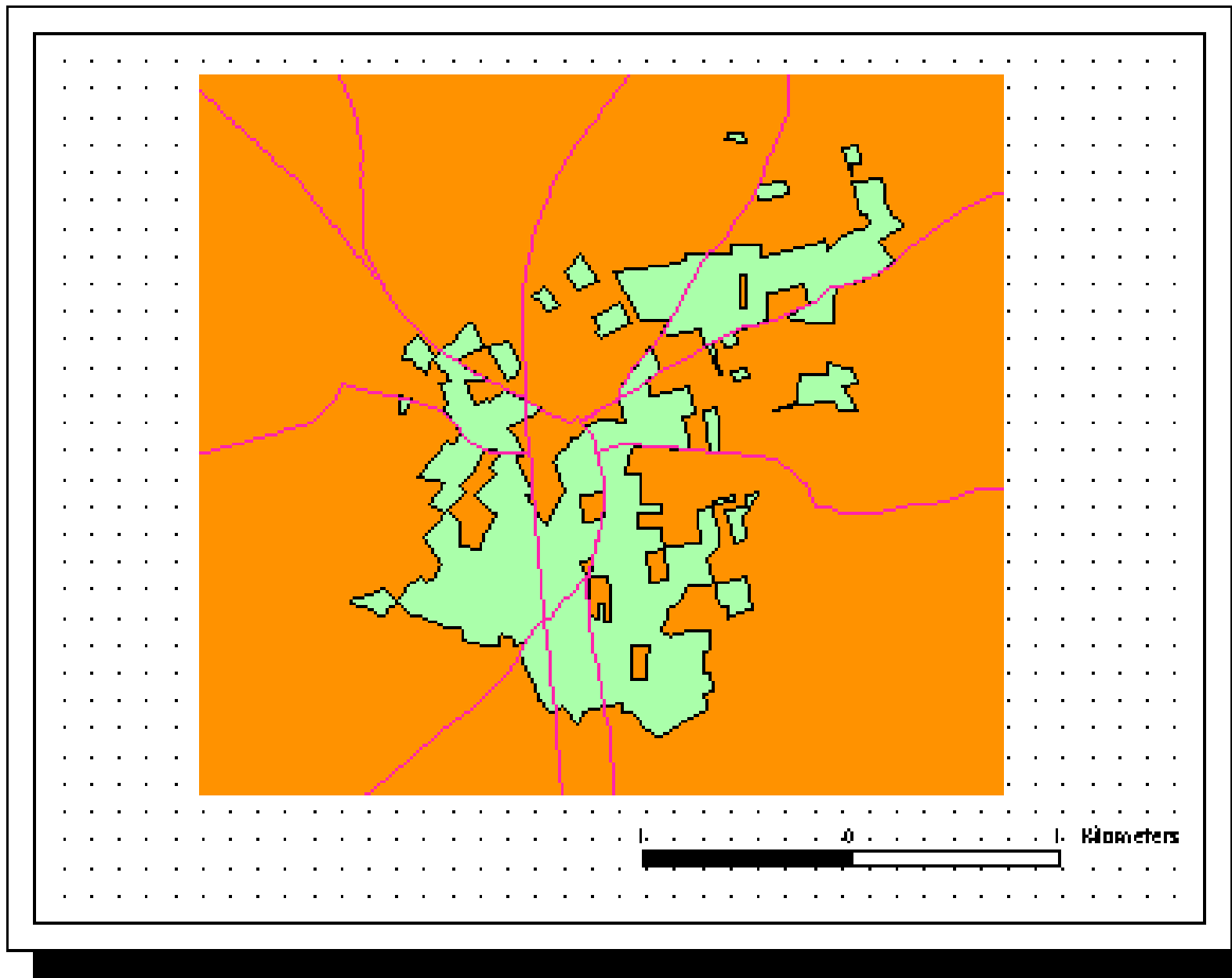


Figure 5b. Belgian enclave H7

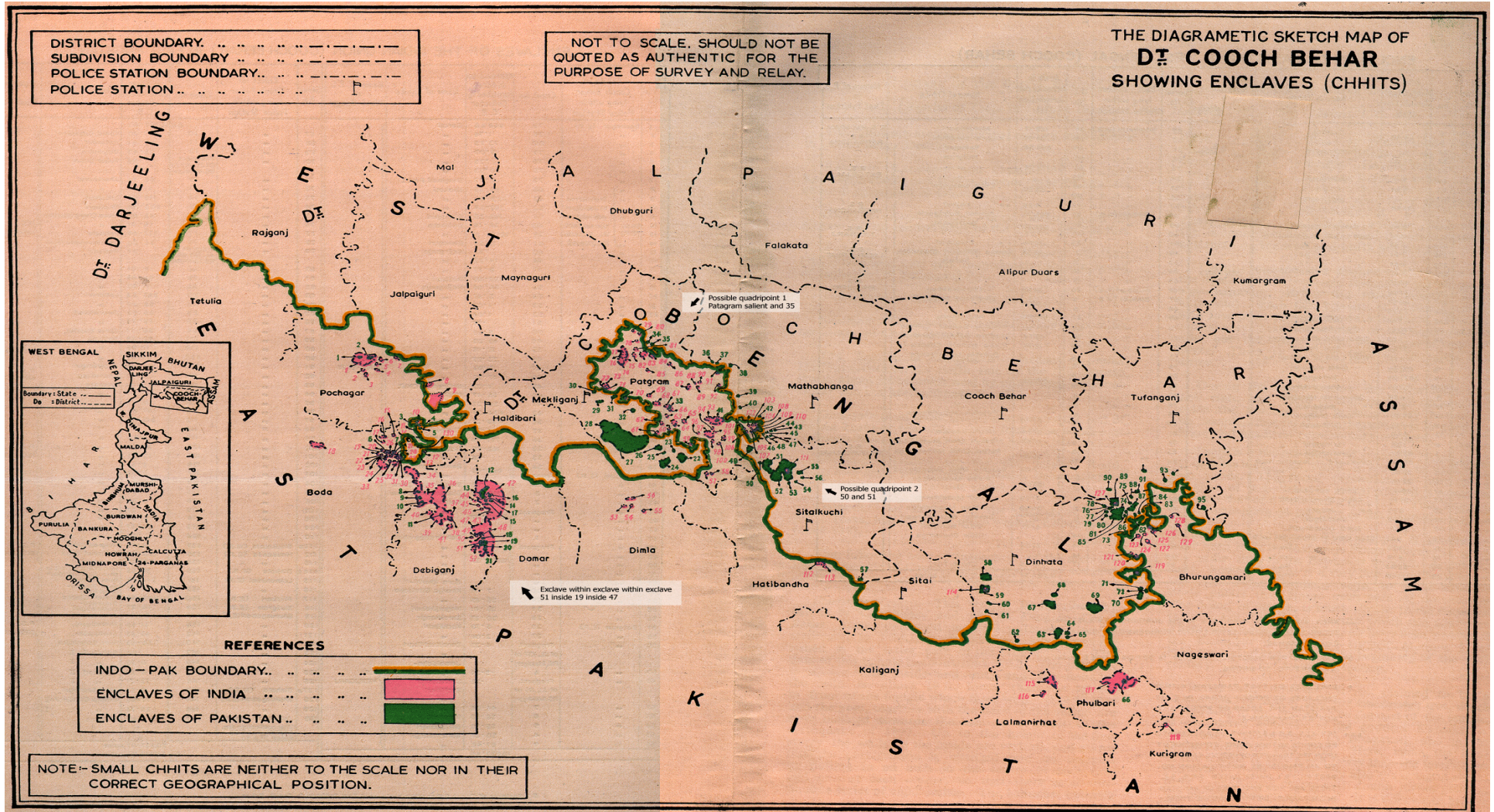






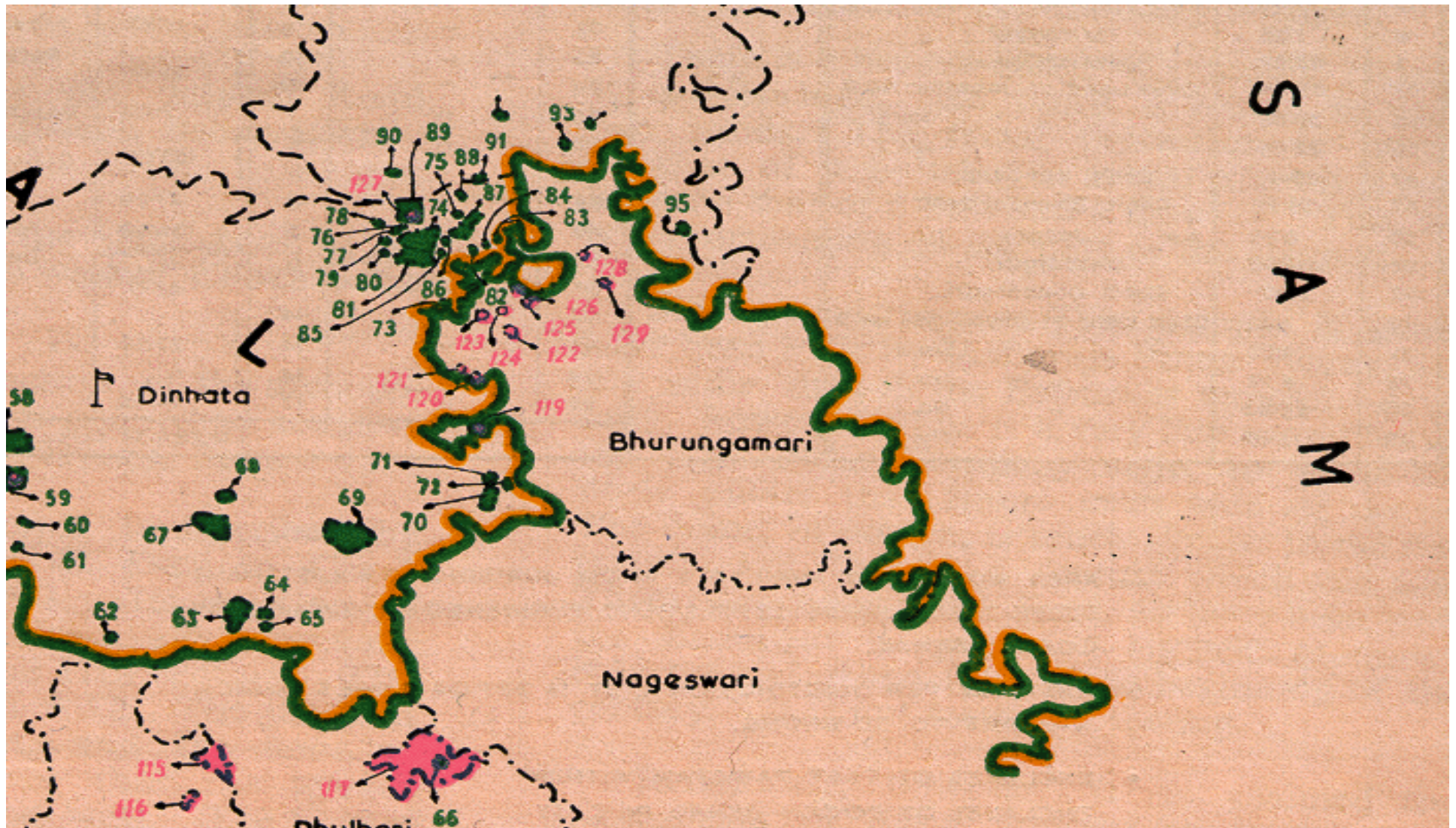


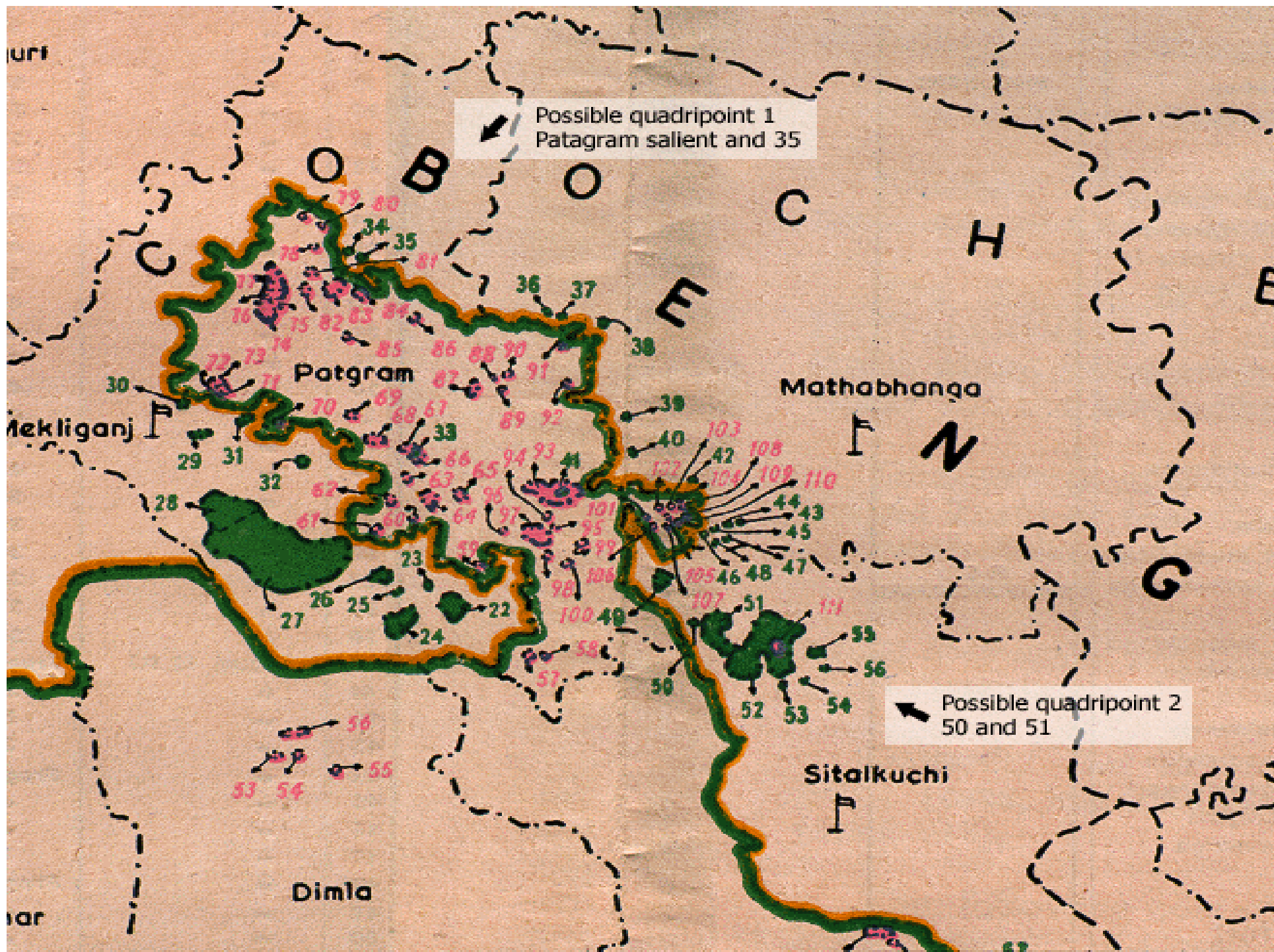
# fractal boundaries in Bengal



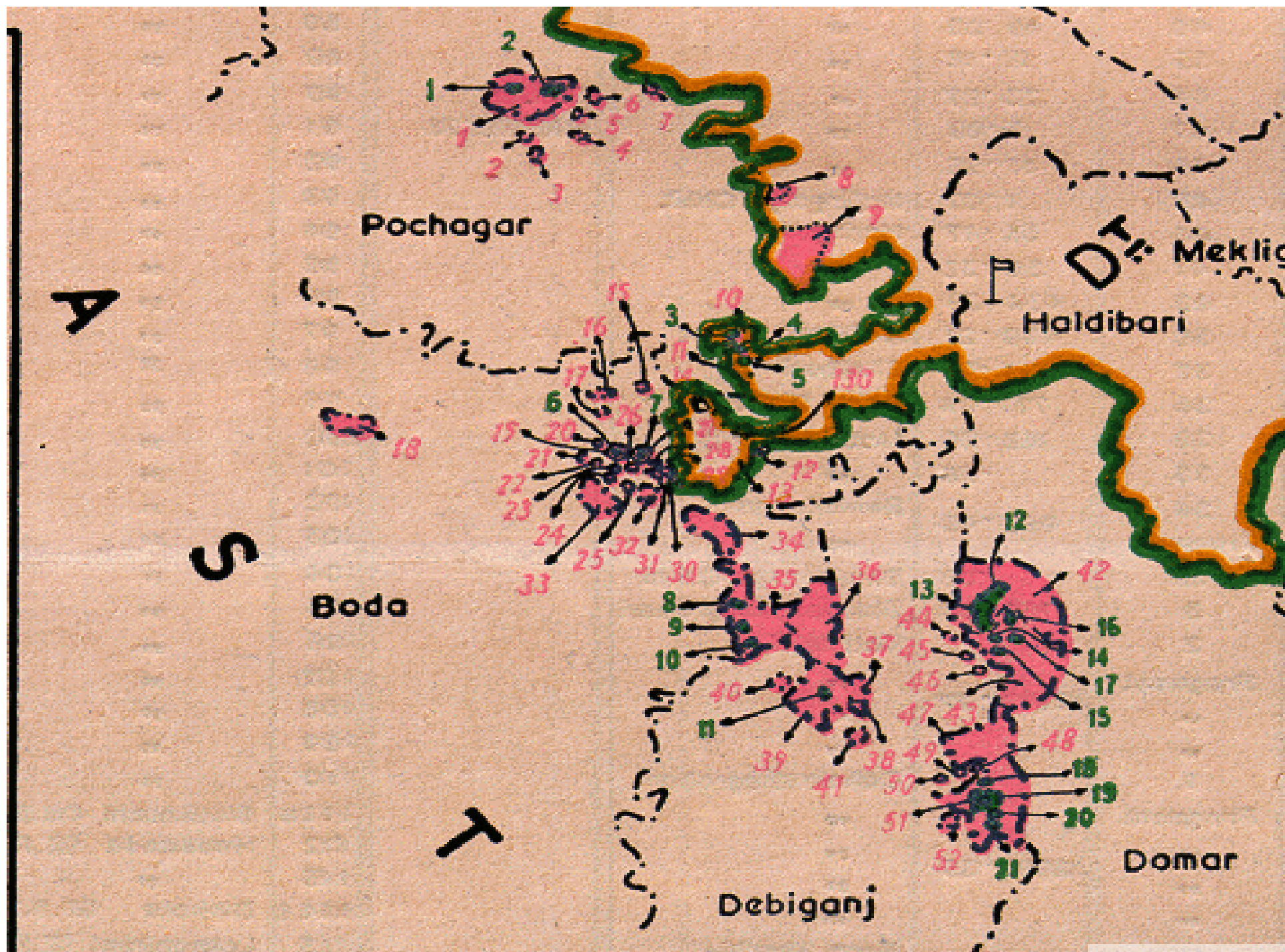


# fractal boundaries in Bengal

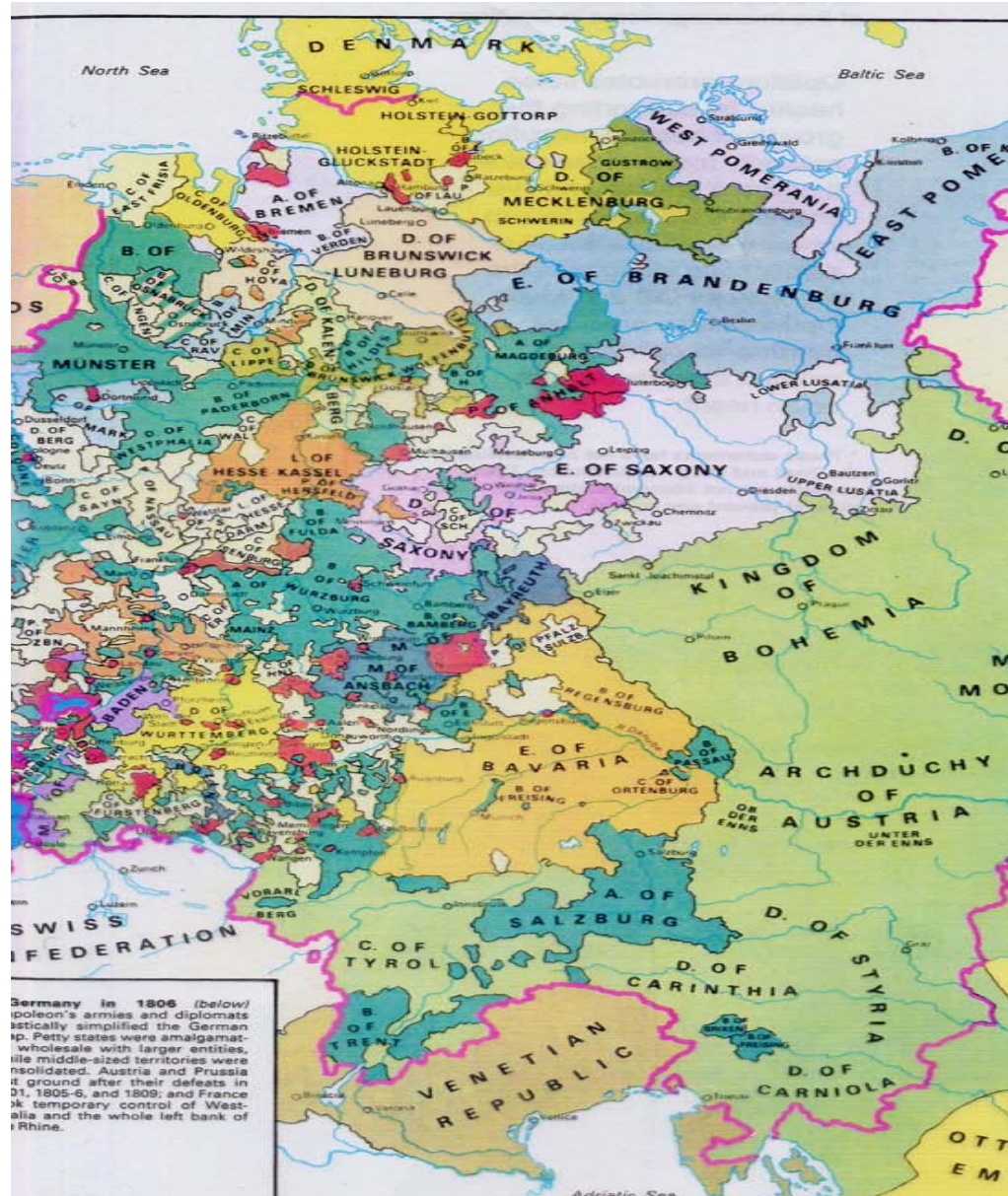








# fractal boundaries in Europe in 1648



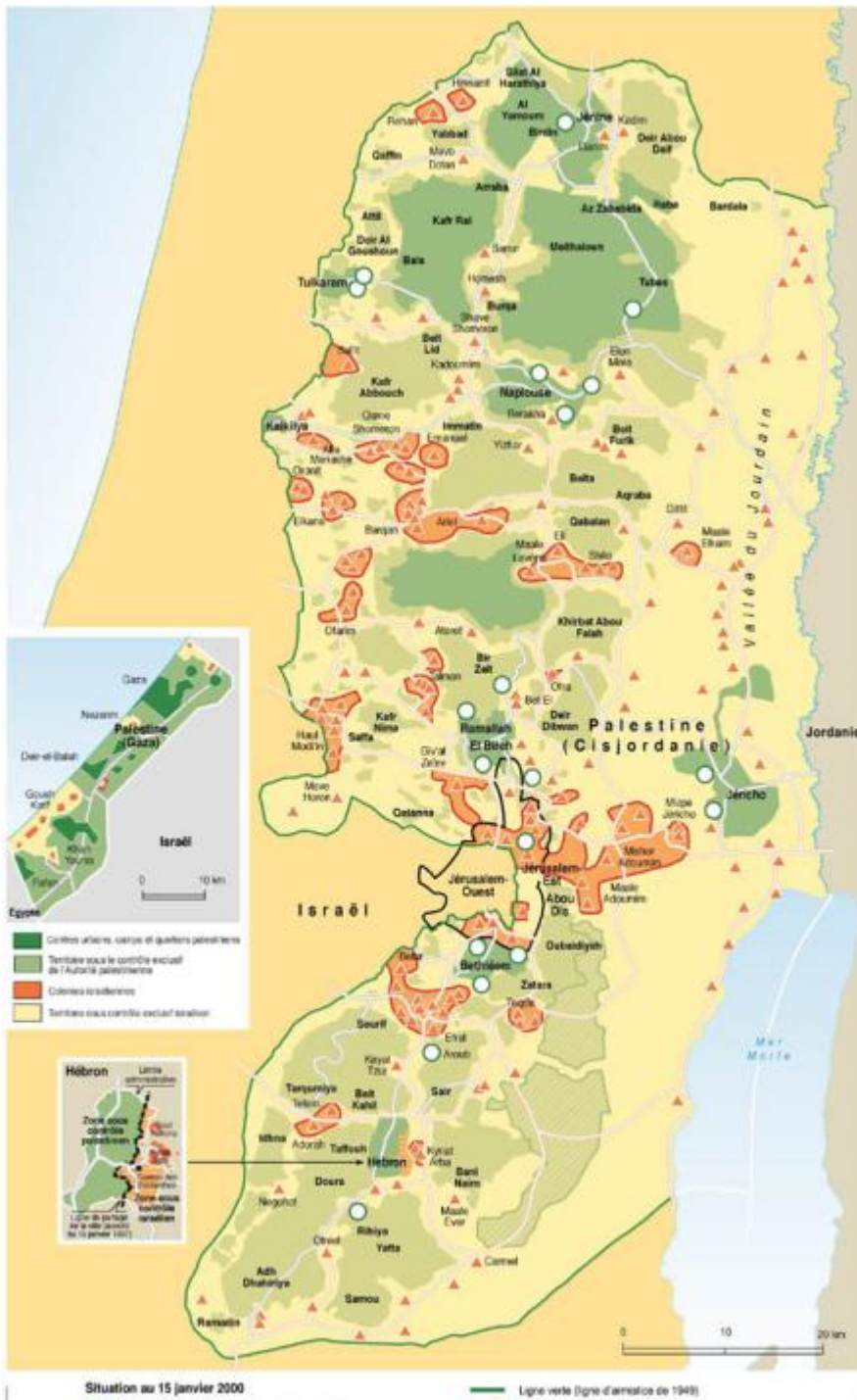
# Four Cypriot exclaves within British territorial enclaves in Cyprus

**The two Cypriot villages of Ormidhia and Xylotimbou are each surrounded by territory that belongs to the British Sovereign Base Area of Dhekelia. This includes two Cypriot exclaves formed by the territory of the Dhekelia Power Station divided into two parts by a British road**





# Fractal boundaries in the Middle East in 2006



# Types of non-Westphalian partition

porous boundaries and co-located multiple  
layers







## Chinatown Manchester

# New York eruvin

In parts of New York, there are a number of different eruvin constructed by the numerous different religious branches, leading to the creation of a web of overlapping eruvin (*Geoforum* 31)

# Liberal objection to the Barnet eruv

- “Eruv-believers would happily pass through their symbolic gateways in the streets, but everyone else would be compelled to do so without such a benefit, even if the compulsory passage through the Eruv structures is offensive to a person’s beliefs.”

# The meaning of life

- We want our lives to mark the world (we want to leave a trace)
- On the Westphalian paradigm this means we want (e.g.) our nation to be a single contiguous whole over which we have exclusive dominion



we all want to leave traces on reality

what the liberal objectors do not see  
is that we can leave traces on reality  
in a variety of non-Westphalian (= non-exclusive) ways

# Consequences

- people should recognize other peoples' use of space

# Liberals who owned property especially worried

- even though property values in an eruv rise

The End

# Virtual Philadelphia

- Imagine a Nozickian virtual reality machine, which generates three-dimensional visual and tactual simulations of landscapes and architectural works. So impressive is the illusion that those inside the machine feel that they are experiencing ordinary reality.
- We could even imagine a community of individuals connected to a single machine that coordinates their experiences in such a way that they seem to be moving around together, meeting in Philadelphia, walking hand-in-hand along the sidewalk.
- A travel agent might advertise trips to Virtual Philadelphia. A real estate agent might offer to sell land there.

# Virtual Philadelphia might be better than real Philadelphia

- But if we discovered at some later point that we were living not in real Philadelphia but in virtual Philadelphia, then we would be disappointed. Why?
- In Virtual Philadelphia I can live in the same building with Madonna. But so can 1 million other people. They can all show photographs of themselves in the elevator with Madonna.
- It is precisely this possibility which tells us what is missing. Living in the same building with Madonna is an *achievement*. It is something highly valued precisely because not everyone can do it. What space provides is the possibility of competition, of economizing; it imposes an ordering of preferences.

# Franchise-Operated Quasi-National Entities (Starbucks, Pizza Hut, ...)

(from Neal Stephenson, *Snow Crash*)

A FOQNE is an organization that, like a nation-state, provides and enforces a system of rules within a given geographic territory but with non-contiguous territory.

A FOQNE consists of plots of real estate that are relatively small (ranging in size from a city-state to a portion of a building).

Each FOQNE offers its citizens a number of havens where the rules and culture are uniform and familiar, no matter what region the individual FOQNE site is in.

# *Snow Crash*

- For Stephenson a FOQNE may offer citizens a place to live, or it may specialize in providing certain goods or services (physical plant security protection, drugs, religion, ...):
  - Mr. Lee's Greater Hong Kong
  - Nova Sicilia
  - Narcolombia
  - Reverend Wayne's Pearly Gates.



# *Snow Crash*

- Burbclaves = a specialized type of FOQNE consisting of a chain of suburban subdivision-sized city-states (gated communities) and offering citizens a place to reside.

# Other explanations

- people do not like physical signs of other peoples' religions

# people like to mark this world

- people like to mark this world by making it point to something transcendent (der Gewölbe des Himmels)